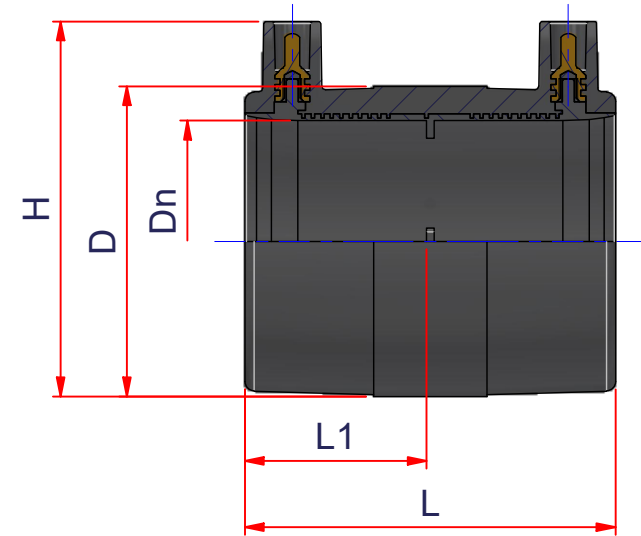


CODE	Weight kg/pc	Volume m <sup>3</sup> /pc	Dn	D	L1	L	H
12EME020	0,035	0,0001	20	30	34	70	51
12EME025	0,05	0,0001	25	38,5	34	70	58
12EME032	0,063	0,0002	32	45	39	80	65
12EME040	0,089	0,0003	40	54,5	41,5	85	74,5
12EME050	0,136	0,0004	50	67	43	88	86
12EME063	0,155	0,0006	63	80	48	98	97,5
12EME075	0,328	0,0012	75	98	61	125	114
12EME090	0,463	0,0019	90	113	72,5	147	129,5
12EME110	0,677	0,0029	110	136	76,5	155	144
12EME125	0,865	0,0039	125	154	82	166	167
12EME140	1,05	0,0048	140	168	83	170	180
12EME160	1,491	0,0067	160	195	86,5	175	203,5
12EME180	-	0,0082	180	215	91,5	185	224
12EME200	2,155	0,0105	200	238	91,5	185	246
12EME225	3,144	0,0168	225	267	117	235	272,5
12EME250	4,531	0,0221	250	300	123	246	300
12EME315	7,045	0,0354	315	375,5	125,5	251	375,5



**EIOFIT**

ITEM: **EME**

DESC: MANICOTTO ELETTROSALDABILE  
ELECTROFUSION COUPLER  
PE100 SDR11 PFA/PN16

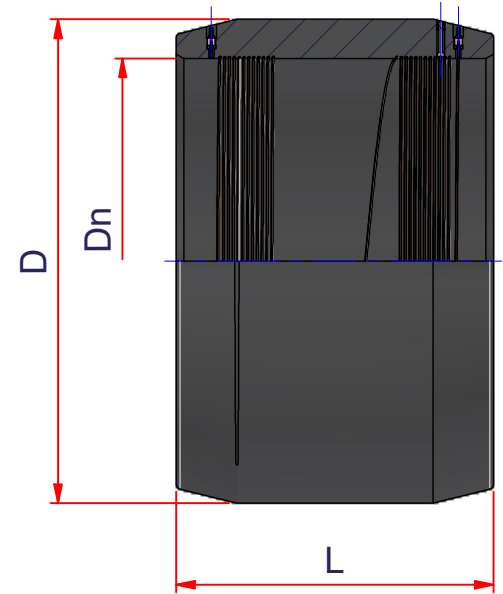


DRAWING No:  
**EL10010**

SHEET OF REV.  
**1 3 -12**

www.nupiindustriaitaliane.com - info@nupinet.com

All dimensions have to be considered in millimeters with 5% tolerance if not otherwise mentioned excluding values as per standard EN 1555 (gas) and/or EN 12201 (water)



CODE	Weight kg/pc	Volume m <sup>3</sup> /pc	Dn	D	L1	L	H
12EME280	6,821	0,0308	280	338	135	270	338
12EME355	11,035	0,0542	355	425	150	300	425
12EME400	15,234	0,0732	400	482	157,5	315	482
12EME450	20,404	0,0999	450	542	170	340	542
12EME500	26,683	0,135	500	596	190	380	596
12EME560	36,604	0,1796	560	670	200	400	670
12EME630	48,048	0,2352	630	752	208	416	752



**EloFIT**

ITEM: **EME**

DESC: MANICOTTO ELETTRISALDABILE  
ELECTROFUSION COUPLER  
PE100 SDR11 PFA/PN16

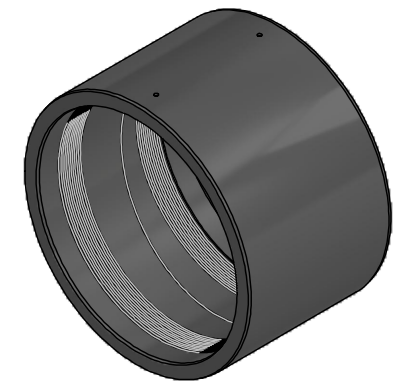
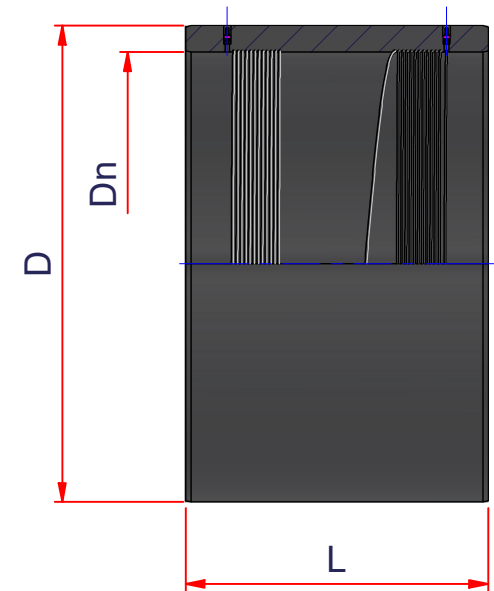


DRAWING No:  
**EL10010**

SHEET OF REV.  
**2 3 -12**

www.nupiindustriaitaliane.com - info@nupinet.com

All dimensions have to be considered in millimeters with 5% tolerance if not otherwise mentioned excluding values as per standard EN 1555 (gas) and/or EN 12201 (water)



CODE	Weight kg/pc	Volume m <sup>3</sup> /pc	Dn	D	L1	L	H
12EME710	-	-	710	-	-	-	-
12EME800	100,048	0,4253	800	970	226	452	970
12EME900	-	-	900	-	-	-	-
12EME1000	-	-	1000	-	-	-	-



**EloFIT**

ITEM: **EME**

DESC: MANICOTTO ELETTROSALDABILE  
ELECTROFUSION COUPLER  
PE100 SDR11 PFA/PN16



DRAWING No:  
**EL10010**

SHEET OF REV.  
**3 3 -12**

www.nupiindustriaitaliane.com - info@nupinet.com

All dimensions have to be considered in millimeters with 5% tolerance if not otherwise mentioned excluding values as per standard EN 1555 (gas) and/or EN 12201 (water)